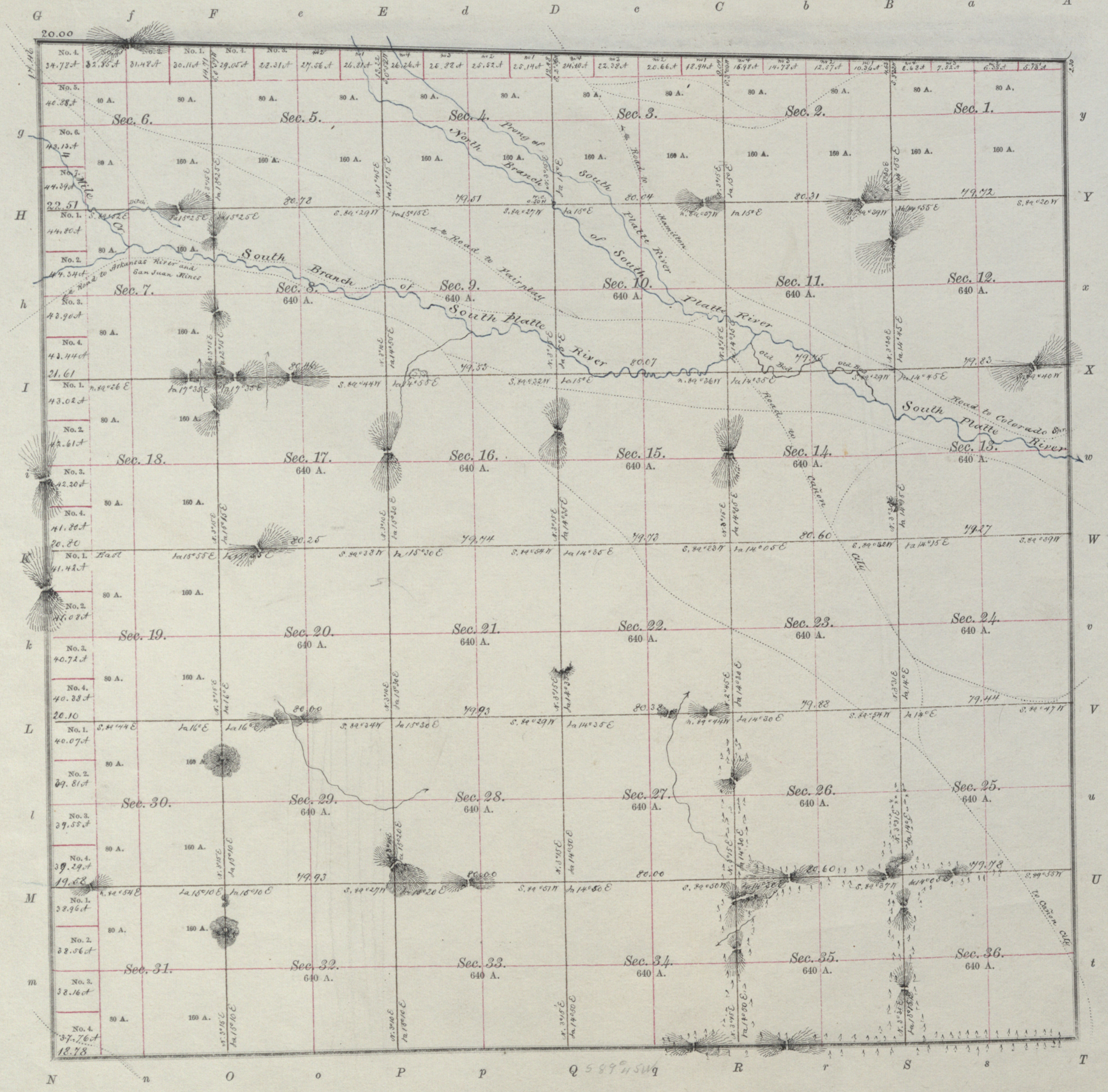


Township No. 12 South Range No. 75. West of the 6th Principal Meridian.



22622.62 Total number of Acres.

Scale, 40 chains to an inch.

Survey Designated.	By whom Surveyed.	Date of Contract.	Amount of Survey.	When Surveyed.
Township.	Ed. D. Bright	June 12 th 1871	M. Chs. Lks.	1871
Sub-division.	Benj. A. Whittemore	May 13 th 1873		1873
			59° 38' 21"	September 12 th to 27 th 1873

The above Map of Township No. 12 South of Range No. 75 West of the 6th Principal Meridian, in Colorado, is strictly conformable to the field notes of the survey thereof on file in this office, which have been examined and approved.

SURVEYOR GENERAL'S OFFICE,
Denver, C. T., December 6th 1873.

W. D. Leasing
Surveyor General.